

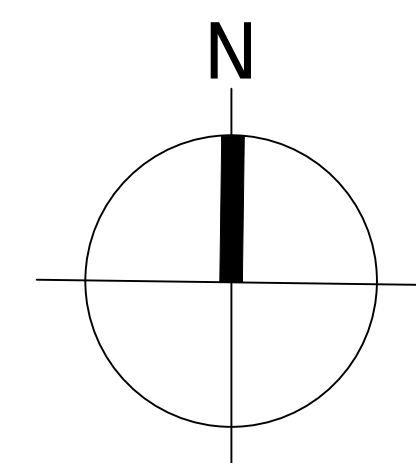
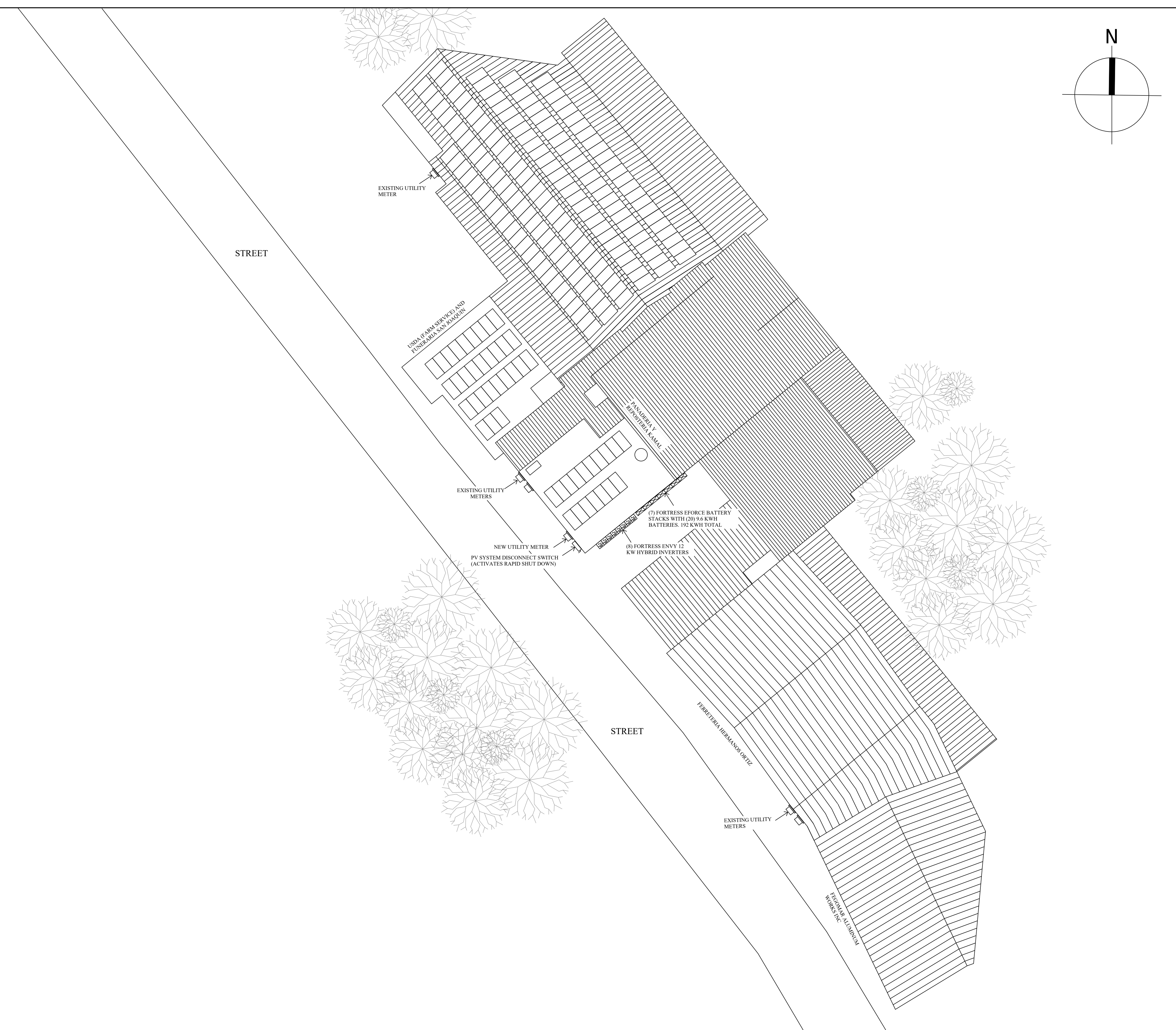
Exhibit C

CONCEPTUAL DRAWING

Request For Proposal
CHM-RFP-2026-001

for

Installation and Commissioning Services for
Community Energy Resilience Hubs (CERH)
Cooperativa Hidroeléctrica de la Montaña



LOCATION PLAN
7B BDA RODRIGUEZ ADJUNTAS PR
00601

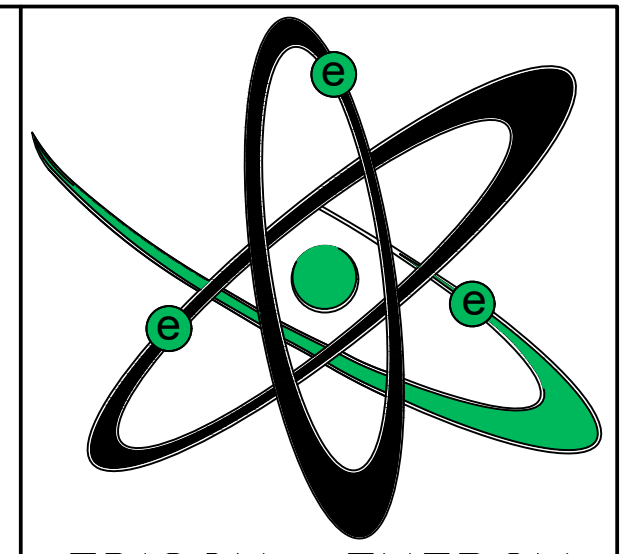
NAD83 ZONE 19 COORDINATES
X: 741246.89
Y: 2009462.66

PV & BESS SYSTEM INFORMATION

TOTAL STC DC SYSTEM SIZE	124.49KW DC
TOTAL AC RATING	96.00 KW AC
TOTAL BATTERY CAPACITY	192.00 KWH
INTERCONNECTION TYPE	LOAD SIDE GRID TIE
INTERCONNECTION VOLTAGE	120/240
PV MODULE SUPPORT SYSTEM	UNIRAC SOLAR MOUNT
INVERTER MODEL	FORTRESS ENVY 12KW
INVERTER CAPACITY	12 KW
INVERTER QUANTITY	8
INVERTER CEC EFFICIENCY	96.5%
PV MODULE	SEG SOLAR SEG-590-BTA-BG
MODULE STC DC RATING	590W
PV MODULE QTY.	211
SHORT CIRCUIT CURRENT (ISC)	13.94 A
CURRENT AT PMAX (IMPP)	13.28A
OPEN CIRCUIT VOLTAGE (VOC)	52.37V
VOLTAGE AT PMAX (VMPP)	44.43V
BATTERY MODEL	FORTRESS EFORCE
BATTERY MODULE CAPACITY	9.6 KWH
BATTERY MODULE QTY.	20
BATTERY STACK QTY.	7

EQUIPMENT LEGEND:

	NEW SOLAR MODULE MODEL: SEG SOLAR SEG-590-BTA-BG (211 TOTAL MODULES)
	NEW HYBRID INVERTER MODEL: FORTRESS ENVY 12KW (8 TOTAL OF INVERTERS)
	UTILITY METER
	TRANSFER SWITCH
	PV SYSTEM DISCONNECT SWITCH (ACTIVATES RAPID SHUTDOWN)
	INVERTER COMBINER PANEL
	FORTRESS EFORCE BATTERY STACK
	PROPANE GENERATOR



EDISON ENERGY ENGINEERING
 Ave. Esmeralda #53
 PMB #25 Guaynabo, P.R. 00696
 Tel: 767-903-7321

PROJECT

PROJECT NAME
CERH
MICRORRED ADJUNTAS
PUEBLO 2

PROPERTY OF:
COOPERATIVA
HIDROELECTRICA DE LA
MONTAÑA

IMPORTANT NOTES

- CONTRACTOR SHALL VERIFY ALL DIMENSIONS AND SITE CONDITIONS BEFORE PROCEEDING WITH WORK. IF ANY DISCREPANCIES, ERRORS OR OMISSIONS SHOULD BE ENCOUNTERED ON PLANS, CONTRACTOR SHALL NOTIFY ENGINEER BEFORE ANY PART OF THE WORK IS STARTED SO THAT PROPER CORRECTIONS ARE MADE. IF ENGINEER IS NOT NOTIFIED PRIOR TO COMMENCING OF THE WORK, THE CONTRACTOR SHALL BEAR FULL RESPONSIBILITY FOR ANY DISCREPANCIES, ERRORS AND/OR OMISSIONS.
- ALL DESIGNS AND DRAWINGS HEREIN AND PRINTS ISSUED BY EDISON ENERGY ENGINEERING ARE THE SOLE PROPERTY OF EDISON ENERGY ENGINEERING AND SHALL NOT BE REUSED ON ANY OTHER LOCATION EXCEPT THE ONE FOR WHICH THEY WERE EXPRESSLY DESIGNED.
- THIS DOCUMENT AND THE INFORMATION CONTAINED THEREON IS THE PROPERTY OF EDISON ENERGY ENGINEERING. REPRODUCTION OR USE IN WHOLE OR IN PART OF THIS DOCUMENT AND THE INFORMATION THEREON BY ANYONE EXCEPT AUTHORIZED PERSONS IN THE FURTHERANCE OF THE INTENDED BUSINESS, WITHOUT THE WRITTEN CONSENT OF EDISON ENERGY ENGINEERING COULD BE IN VIOLATION OF COPYRIGHTS AND IS PROHIBITED.
- CONTRACTOR SHALL NOT USE FOR CONSTRUCTION PURPOSES ANY DRAWINGS THAT WERE ADVANCED TO HIM PRIOR TO THE START OF CONSTRUCTION. ALL PLANS BEING USED BY CONTRACTOR SHOULD BEAR A STAMP WITH THE LABEL "FOR CONSTRUCTION ONLY" SIGNED BY THE PROFESSIONAL ENGINEER.

REVISIONS

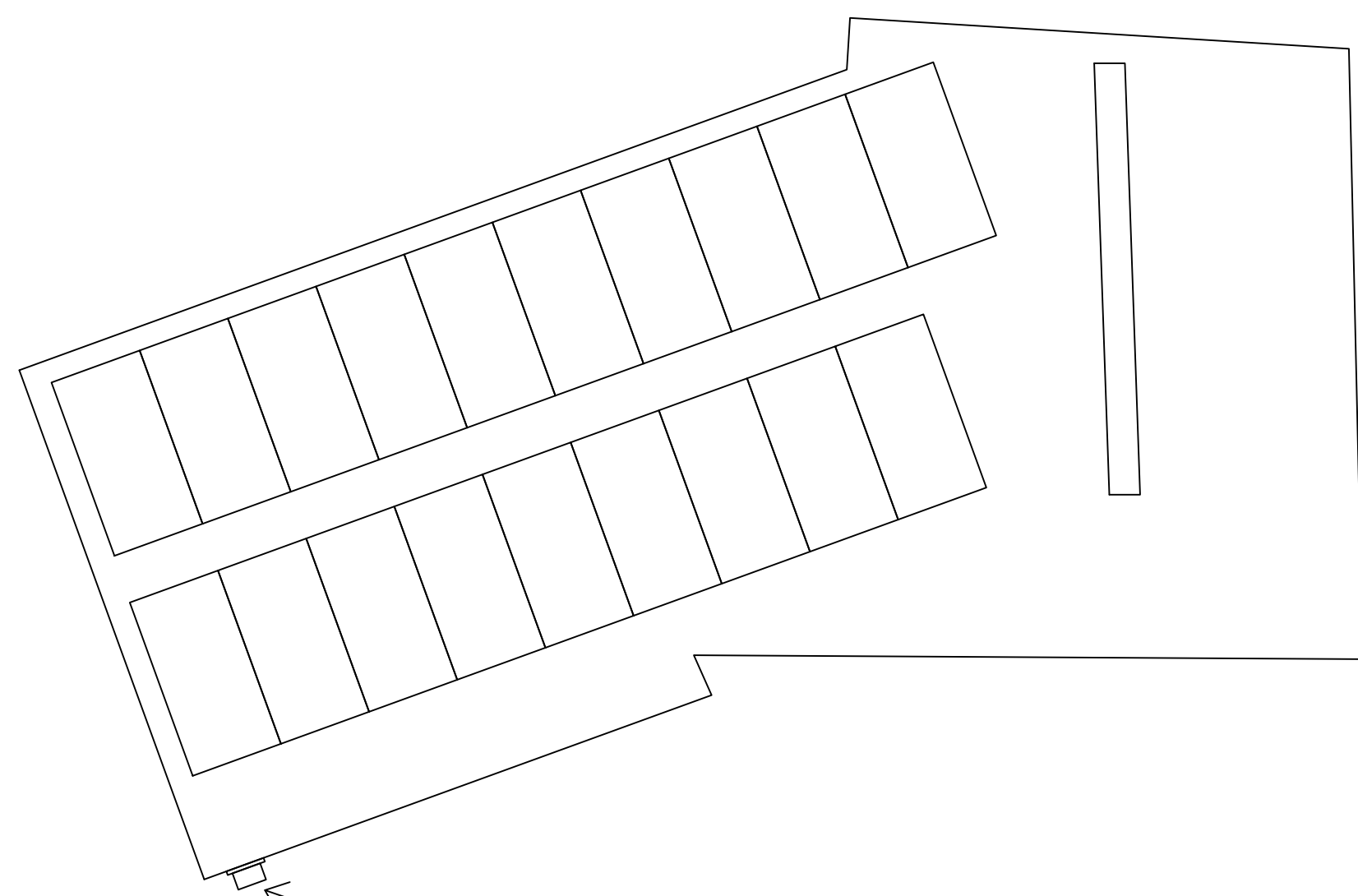
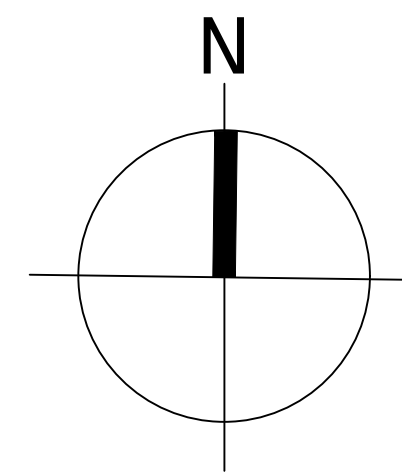
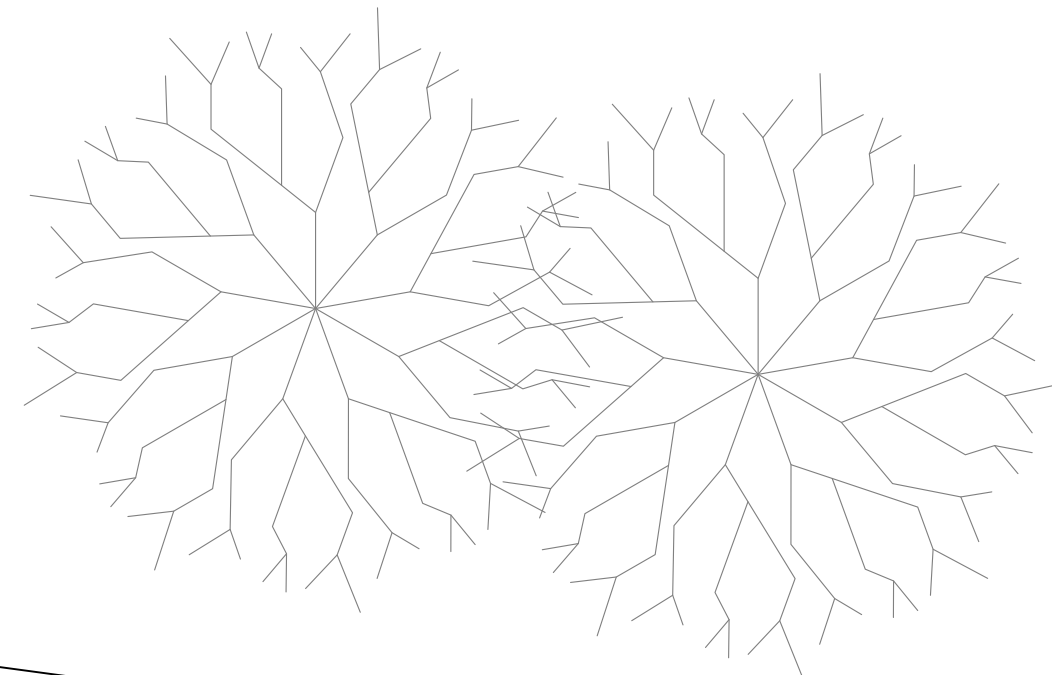
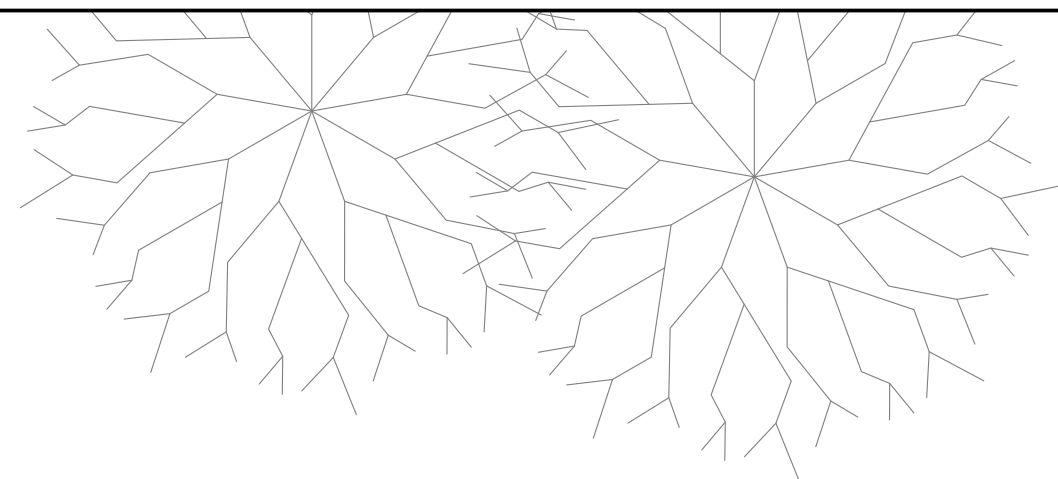
NO.	DATE	REVISION

SHEET TITLE

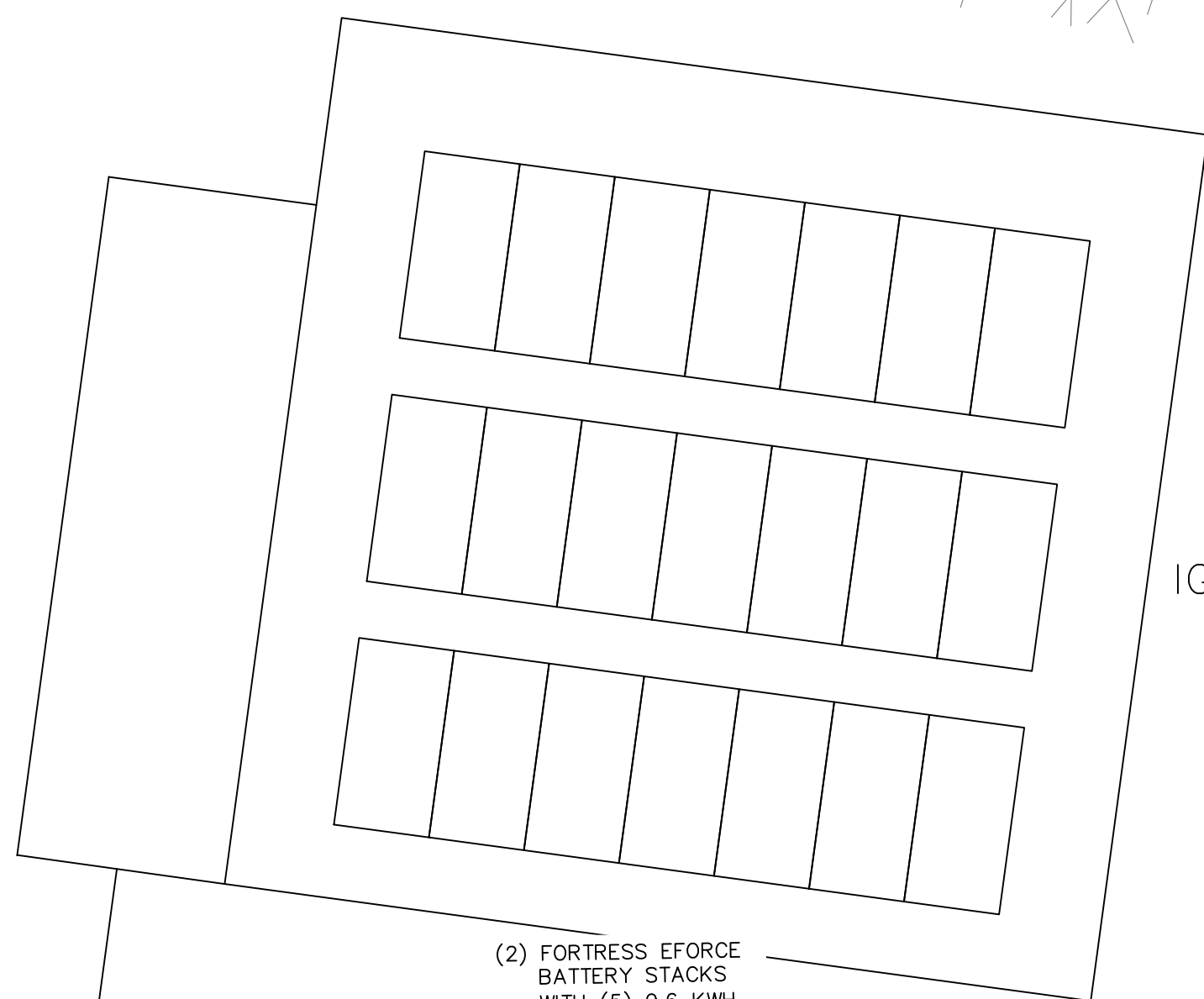
GENERAL SITEPLAN

DRAWING BY:
WILFREDO PEREZ
 DATE: **ABRIL 21, 2026**
 PROJECT NO.
 SHEET NO.

GENERAL SITEPLAN
 N.T.S.



CASA LADO PANADERIA



IGLESIA COMUNIDAD

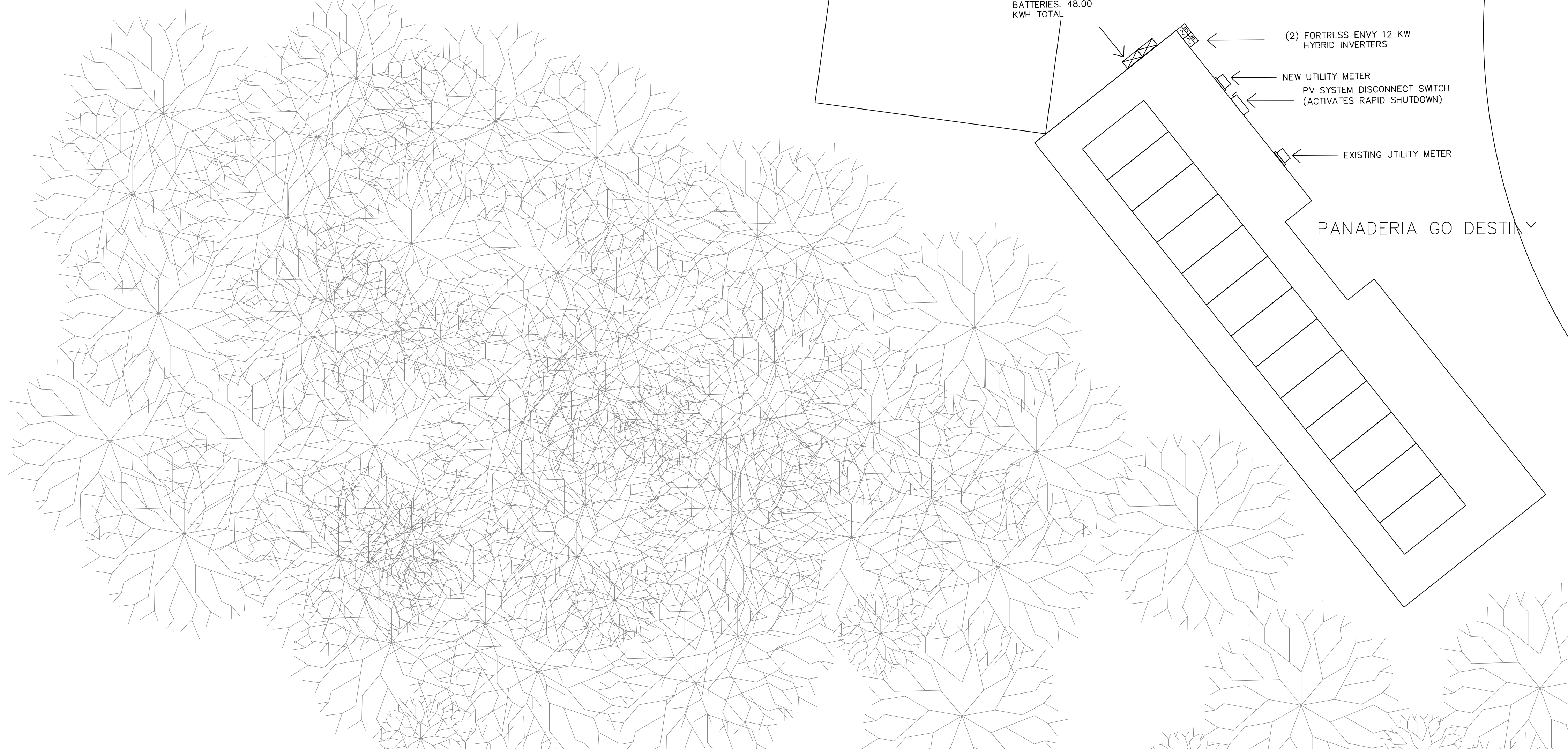
(2) FORTRESS EFORCE BATTERY STACKS WITH (5) 9.6 KWH BATTERIES. 48.00 KWH TOTAL

(2) FORTRESS ENVY 12 KW HYBRID INVERTERS

NEW UTILITY METER
PV SYSTEM DISCONNECT SWITCH (ACTIVATES RAPID SHUTDOWN)

EXISTING UTILITY METER

PANADERIA GO DESTINY



LOCATION PLAN
CAR 10 R518 K6 H2 BO
GARZAS ADJUNTAS
PR 00601

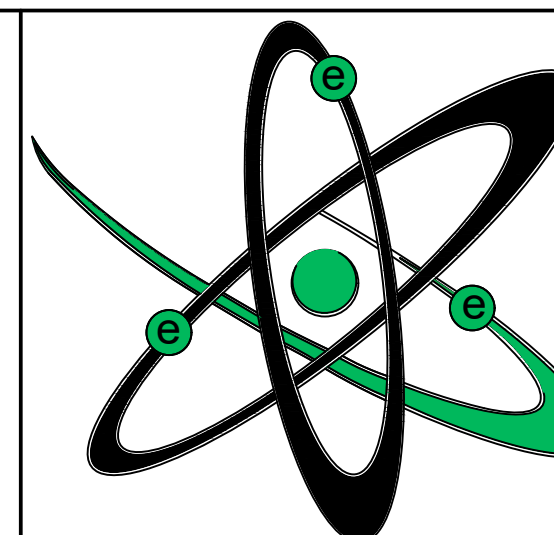
NAD83 ZONE 19 COORDINATES
X: 739653.93
Y: 2006728.19

PV & BESS SYSTEM INFORMATION

TOTAL STC DC SYSTEM SIZE	31.27 KW DC
TOTAL AC RATING	24.00 KW AC
TOTAL BATTERY CAPACITY	48.00 KWH
INTERCONNECTION TYPE	LOAD SIDE GRID TIE
INTERCONNECTION VOLTAGE	120/240
PV MODULE SUPPORT SYSTEM	UNIRAC SOLAR MOUNT
INVERTER MODEL	FORTRESS ESPIRE MINI
INVERTER CAPACITY	12 KW
INVERTER QUANTITY	2
INVERTER CEC EFFICIENCY	96.5%
PV MODULE	SEG SOLAR SEG-590-BTA-BG
MODULE STC DC RATING	590W
PV MODULE QTY.	53
SHORT CIRCUIT CURRENT (ISC)	13.94 A
CURRENT AT P _{MAX} (MPP)	13.28 A
OPEN CIRCUIT VOLTAGE (VOC)	52.37 V
VOLTAGE AT P _{MAX} (VMPP)	44.43 V
BATTERY MODEL	FORTRESS EFORCE
BATTERY MODULE CAPACITY	9.6 KWH
BATTERY MODULE QTY.	5
BATTERY STACK QTY.	2

EQUIPMENT LEGEND:

	NEW SOLAR MODULE MODEL: SEG SOLAR SEG-590-BTA-BG (53 TOTAL MODULES)
	NEW HYBRID INVERTER MODEL: FORTRESS ESPIRE MINI (2 TOTAL OF INVERTERS)
	UTILITY METER
	TRANSFER SWITCH
	PV SYSTEM DISCONNECT SWITCH (ACTIVATES RAPID SHUTDOWN)
	INVERTER COMBINER PANEL
	FORTRESS EFORCE BATTERY STACK
	PROPANE GENERATOR



EDISON ENERGY ENGINEERING

Ave. Esmeralda #53
PMB #25 Guaynabo, P.R. 00696
Tel: 767-903-7321

PROJECT

PROJECT NAME

**CERH
MICORRED ADJUNTAS
LAGO GARZAS 1**

PROPERTY OF:

**COOPERATIVA
HIDROELECTRICA DE LA
MONTAÑA**

IMPORTANT NOTES

- CONTRACTOR SHALL VERIFY ALL DIMENSIONS AND SITE CONDITIONS BEFORE PROCEEDING WITH WORK. IF ANY DISCREPANCIES, ERRORS OR OMISSIONS SHOULD BE ENCOUNTERED ON PLANS, CONTRACTOR SHALL NOTIFY ENGINEER BEFORE ANY PART OF THE WORK IS STARTED SO THAT PROPER CORRECTIONS ARE MADE. IF ENGINEER IS NOT NOTIFIED PRIOR TO COMMENCING OF THE WORK, THE CONTRACTOR SHALL BEAR FULL RESPONSIBILITY FOR ANY DISCREPANCIES, ERRORS AND/OR OMISSIONS.
- ALL DESIGNS AND DRAWINGS HEREIN AND PRINTS ISSUED BY EDISON ENERGY ENGINEERING ARE THE SOLE PROPERTY OF EDISON ENERGY ENGINEERING AND SHALL NOT BE REUSED ON ANY OTHER LOCATION EXCEPT THE ONE FOR WHICH THEY WERE EXPRESSLY DESIGNED.
- THIS DOCUMENT AND THE INFORMATION CONTAINED THEREON IS THE PROPERTY OF EDISON ENERGY ENGINEERING. REPRODUCTION OR USE IN WHOLE OR IN PART OF THIS DOCUMENT AND THE INFORMATION THEREON BY ANYONE EXCEPT AUTHORIZED PERSONS IN THE FURTHERANCE OF THE INTENDED BUSINESS, WITHOUT THE WRITTEN CONSENT OF EDISON ENERGY ENGINEERING COULD BE IN VIOLATION OF COPYRIGHTS AND IS PROHIBITED.
- CONTRACTOR SHALL NOT USE FOR CONSTRUCTION PURPOSES ANY DRAWINGS THAT WERE ADVANCED TO HIM PRIOR TO THE START OF CONSTRUCTION. ALL PLANS BEING USED BY CONTRACTOR SHOULD BEAR A STAMP WITH THE LABEL "FOR CONSTRUCTION ONLY" SIGNED BY THE PROFESSIONAL ENGINEER.

REVISIONS

NO.	DATE	REVISION

SHEET TITLE

GENERAL SITEPLAN

DRAWING BY:
CHRISTOPHER MONTALVO

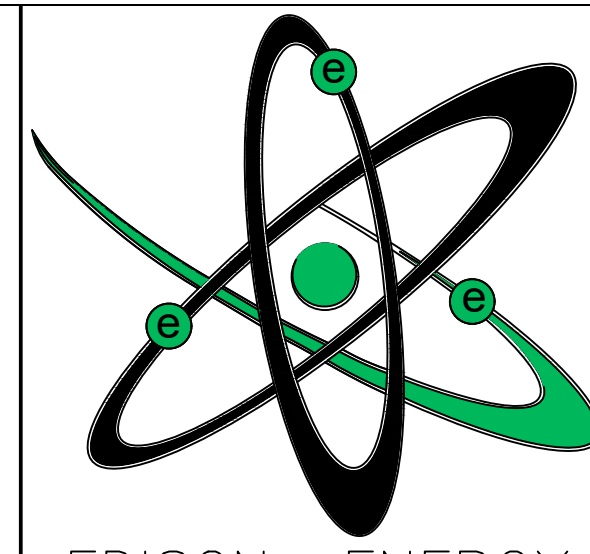
DATE
APRIL 6, 2026

PROJECT NO.

SHEET NO.

GENERAL SITEPLAN

N.T.S.



EDISON ENERGY ENGINEERING
 Ave. Esmeralda #53
 P.M.B. #25 Guaynabo, P.R. 00696
 Tel. 787-903-7321

PROJECT

PROJECT NAME
 CERH MICORRED ADJUNTAS LAGO GARZAS 1

PROPERTY OF:
 COOPERATIVA HIDROELECTRICA DE LA MONTAÑA

IMPORTANT NOTES

- CONTRACTOR SHALL VERIFY ALL DIMENSIONS AND SITE CONDITIONS BEFORE PROCEEDING WITH WORK. IF ANY DISCREPANCIES, ERRORS OR OMISSIONS SHOULD BE ENCOUNTERED ON PLANS, CONTRACTOR SHALL NOTIFY ENGINEER BEFORE ANY PART OF THE WORK IS STARTED SO THAT PROPER CORRECTIONS ARE MADE. IF ENGINEER IS NOT NOTIFIED PRIOR TO COMMENCING OF THE WORK, THE CONTRACTOR SHALL BEAR FULL RESPONSIBILITY FOR ANY DISCREPANCIES, ERRORS AND/OR OMISSIONS.
- ALL DESIGNS AND DRAWINGS HEREIN AND PRINTS ISSUED BY EDISON ENERGY ENGINEERING ARE THE SOLE PROPERTY OF EDISON ENERGY ENGINEERING AND SHALL NOT BE REUSED ON ANY OTHER LOCATION EXCEPT THE ONE FOR WHICH THEY WERE EXPRESSLY DESIGNED.
- THIS DOCUMENT AND THE INFORMATION CONTAINED THEREON IS THE PROPERTY OF EDISON ENERGY ENGINEERING. REPRODUCTION OR USE IN WHOLE OR IN PART OF THIS DOCUMENT AND THE INFORMATION THEREON BY ANYONE EXCEPT AUTHORIZED PERSONS IN THE FURTHERANCE OF THE INTENDED BUSINESS, WITHOUT THE WRITTEN CONSENT OF EDISON ENERGY ENGINEERING COULD BE IN VIOLATION OF COPYRIGHTS AND IS PROHIBITED.
- CONTRACTOR SHALL NOT USE FOR CONSTRUCTION PURPOSES ANY DRAWINGS THAT WERE ADVANCED TO HIM PRIOR TO THE START OF CONSTRUCTION. ALL PLANS BEING USED BY CONTRACTOR SHOULD BEAR A STAMP WITH THE LABEL "FOR CONSTRUCTION ONLY" SIGNED BY THE PROFESSIONAL ENGINEER.

REVISIONS

NO.	DATE	REVISION

SHEET TITLE
 CONCEPTUAL PHOTOVOLTAIC SYSTEM ONE-LINE DIAGRAM

DRAWING BY:
 CHRISTOPHER MONTALVO

DATE
 APRIL 6, 2026

PROJECT NO.

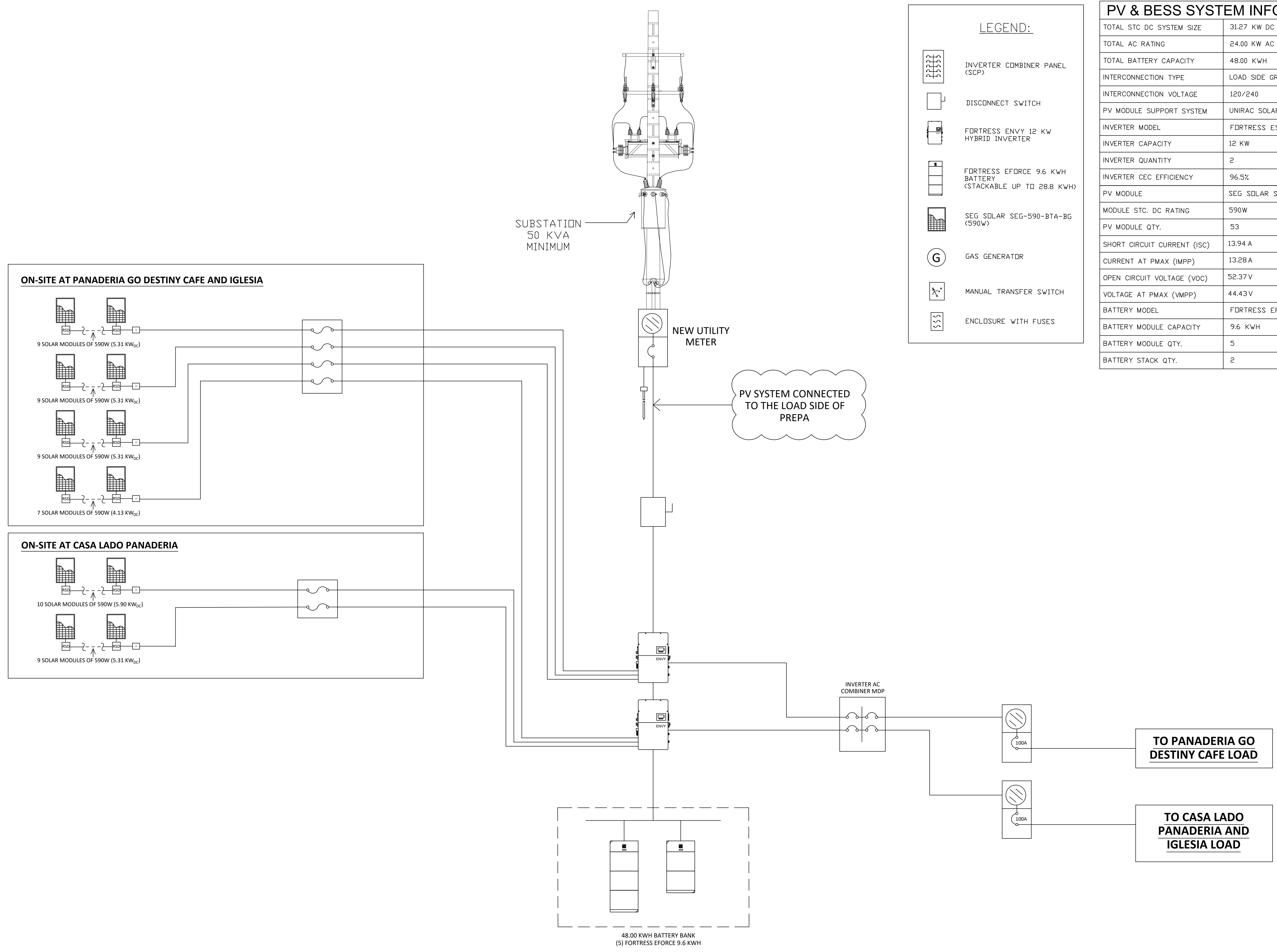
SHEET NO.

PV & BESS SYSTEM INFORMATION

TOTAL STC DC SYSTEM SIZE	31.27 KW DC
TOTAL AC RATING	24.00 KW AC
TOTAL BATTERY CAPACITY	48.00 KWH
INTERCONNECTION TYPE	LOAD SIDE GRID TIE
INTERCONNECTION VOLTAGE	120/240
PV MODULE SUPPORT SYSTEM	UNIRAC SOLAR MOUNT
INVERTER MODEL	FORTRESS ESPIRE MINI
INVERTER CAPACITY	12 KW
INVERTER QUANTITY	2
INVERTER CEC EFFICIENCY	96.5%
PV MODULE	SEG SOLAR SEG-590-BTA-BG
MODULE STC DC RATING	590W
PV MODULE QTY.	53
SHORT CIRCUIT CURRENT (ISC)	13.94 A
CURRENT AT PMAX (IMPP)	13.28A
OPEN CIRCUIT VOLTAGE (VOC)	52.37V
VOLTAGE AT PMAX (VMPP)	44.43V
BATTERY MODEL	FORTRESS EFORCE
BATTERY MODULE CAPACITY	9.6 KWH
BATTERY MODULE QTY.	5
BATTERY STACK QTY.	2

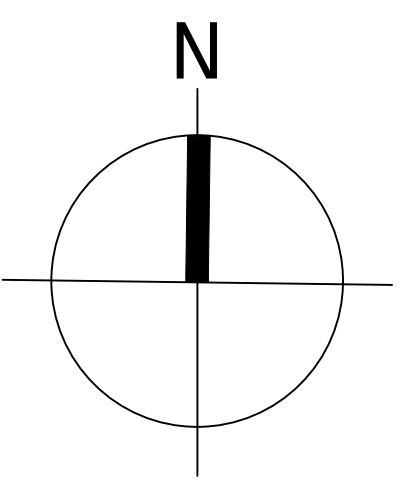
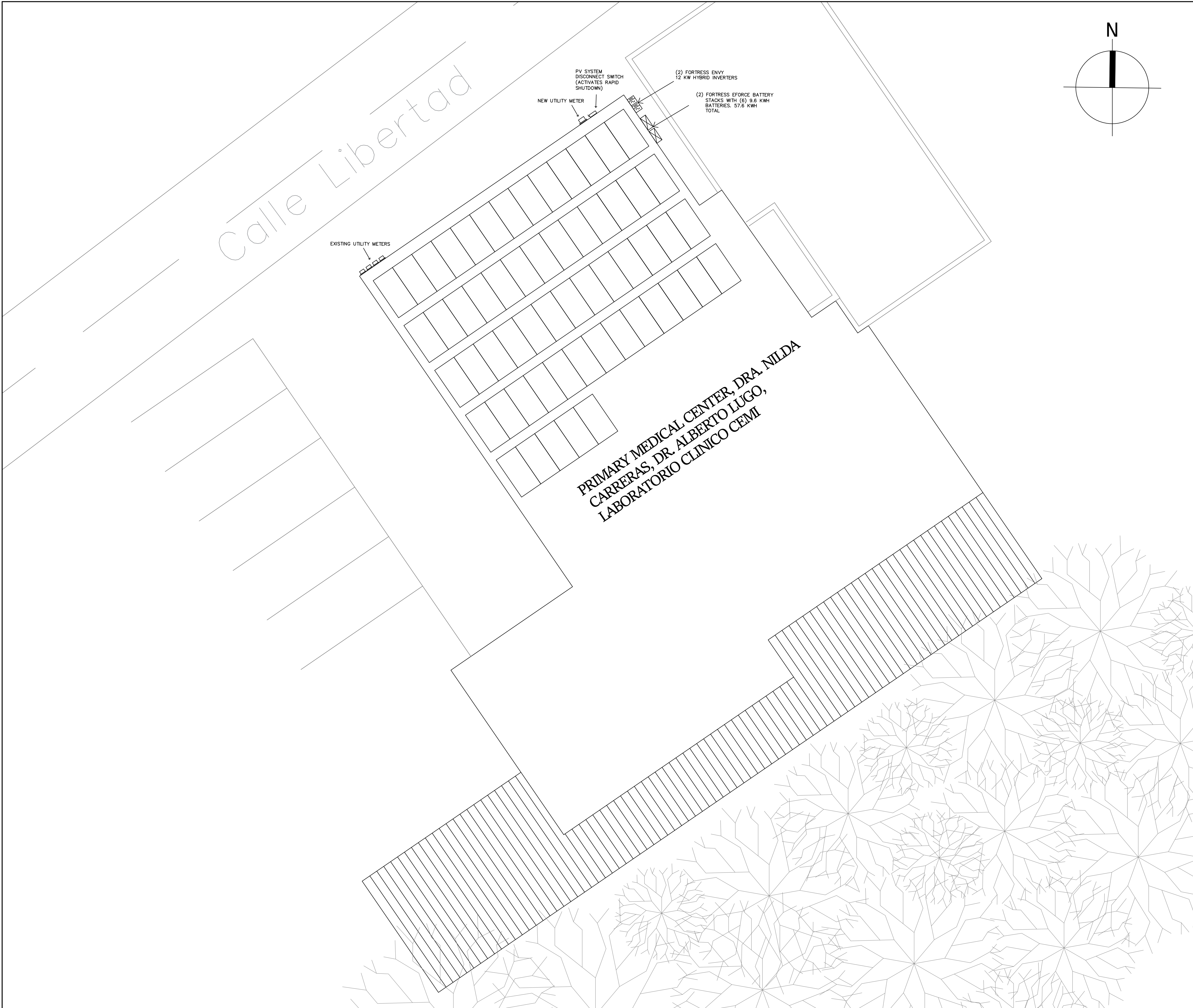
LEGEND:

- INVERTER COMBINER PANEL (SCP)
- DISCONNECT SWITCH
- FORTRESS ENVY 12 KW HYBRID INVERTER
- FORTRESS EFORCE 9.6 KWH BATTERY (STACKABLE UP TO 28.8 KWH)
- SEG SOLAR SEG-590-BTA-BG (590W)
- GAS GENERATOR
- MANUAL TRANSFER SWITCH
- ENCLOSURE WITH FUSES



CONCEPTUAL PHOTOVOLTAIC SYSTEM ONE-LINE DIAGRAM

N.T.S.



EDISON ENERGY ENGINEERING
 Ave. Esmeralda #53
 PMB #25 Guaynabo, P.R. 00696
 Tel: 767-903-7321

PROJECT

PROJECT NAME
 CERH
 MICRORRED JAYUYA
 PUEBLO 2

PROPERTY OF:
 COOPERATIVA
 HIDROELECTRICA DE LA
 MONTAÑA

IMPORTANT NOTES

- CONTRACTOR SHALL VERIFY ALL DIMENSIONS AND SITE CONDITIONS BEFORE PROCEEDING WITH WORK. IF ANY DISCREPANCIES, ERRORS OR OMISSIONS SHOULD BE ENCOUNTERED ON PLANS, CONTRACTOR SHALL NOTIFY ENGINEER BEFORE ANY PART OF THE WORK IS STARTED SO THAT PROPER CORRECTIONS ARE MADE. IF ENGINEER IS NOT NOTIFIED PRIOR TO COMMENCING OF THE WORK, THE CONTRACTOR SHALL BEAR FULL RESPONSIBILITY FOR ANY DISCREPANCIES, ERRORS AND/OR OMISSIONS.
- ALL DESIGNS AND DRAWINGS HEREIN AND PRINTS ISSUED BY EDISON ENERGY ENGINEERING ARE THE SOLE PROPERTY OF EDISON ENERGY ENGINEERING AND SHALL NOT BE REUSED ON ANY OTHER LOCATION EXCEPT THE ONE FOR WHICH THEY WERE EXPRESSLY DESIGNED.
- THIS DOCUMENT AND THE INFORMATION CONTAINED THEREON IS THE PROPERTY OF EDISON ENERGY ENGINEERING. REPRODUCTION OR USE IN WHOLE OR IN PART OF THIS DOCUMENT AND THE INFORMATION THEREON BY ANYONE EXCEPT AUTHORIZED PERSONS IN THE FURTHERANCE OF THE INTENDED BUSINESS, WITHOUT THE WRITTEN CONSENT OF EDISON ENERGY ENGINEERING COULD BE IN VIOLATION OF COPYRIGHTS AND IS PROHIBITED.
- CONTRACTOR SHALL NOT USE FOR CONSTRUCTION PURPOSES ANY DRAWINGS THAT WERE ADVANCED TO HIM PRIOR TO THE START OF CONSTRUCTION. ALL PLANS BEING USED BY CONTRACTOR SHOULD BEAR A STAMP WITH THE LABEL "FOR CONSTRUCTION ONLY" SIGNED BY THE PROFESSIONAL ENGINEER.

LOCATION PLAN
 49 C LIBERTAD JAYUYA PR
 00664

NAD83 ZONE 19 COORDINATES
 X: 754824.26
 Y: 2016058.20

PV & BESS SYSTEM INFORMATION

TOTAL STC DC SYSTEM SIZE	33.63 KW DC
TOTAL AC RATING	24.00 KW AC
TOTAL BATTERY CAPACITY	57.6 KWH
INTERCONNECTION TYPE	LOAD SIDE GRID TIE
INTERCONNECTION VOLTAGE	120/240
PV MODULE SUPPORT SYSTEM	UNIRAC SOLAR MOUNT
INVERTER MODEL	FORTRESS ENVY 12KW
INVERTER CAPACITY	12 KW
INVERTER QUANTITY	2
INVERTER CEC EFFICIENCY	96.5%
PV MODULE	SEG SOLAR SEG-590-BTA-BG
MODULE STC DC RATING	590W
PV MODULE QTY.	57
SHORT CIRCUIT CURRENT (ISC)	13.94 A
CURRENT AT P _{MAX} (IMPP)	13.28 A
OPEN CIRCUIT VOLTAGE (VOC)	52.37 V
VOLTAGE AT P _{MAX} (VMPP)	44.43 V
BATTERY MODEL	FORTRESS EFORCE
BATTERY MODULE CAPACITY	9.6 KWH
BATTERY MODULE QTY.	6
BATTERY STACK QTY.	2

EQUIPMENT LEGEND:

	NEW SOLAR MODULE MODEL: SEG SOLAR SEG-590-BTA-BG (57 TOTAL MODULES)
	NEW HYBRID INVERTER MODEL: FORTRESS ENVY 12KW (2 TOTAL OF INVERTERS)
	UTILITY METER
	TRANSFER SWITCH
	PV SYSTEM DISCONNECT SWITCH (ACTIVATES RAPID SHUTDOWN)
	INVERTER COMBINER PANEL
	FORTRESS EFORCE BATTERY STACK
	PROPANE GENERATOR

REVISIONS

NO.	DATE	REVISION

SHEET TITLE

GENERAL SITEPLAN

DRAWING BY:
EDISON PARES JIMENEZ

DATE
 APRIL 22, 2026

PROJECT NO.

SHEET NO.

GENERAL SITEPLAN
 N.T.S.



EDISON ENERGY ENGINEERING
 Ave. Esmeralda #53
 PMB #25 Guaynabo, P.R. 00696
 Tel. 787-903-7321

PROJECT
 PROJECT NAME
CERH MICRORRED JAYUYA PUEBLO 2

PROPERTY OF:
COOPERATIVA HIDROELECTRICA DE LA MONTAÑA

IMPORTANT NOTES

- CONTRACTOR SHALL VERIFY ALL DIMENSIONS AND SITE CONDITIONS BEFORE PROCEEDING WITH WORK. IF ANY DISCREPANCIES, ERRORS OR OMISSIONS SHOULD BE ENCOUNTERED ON PLANS, CONTRACTOR SHALL NOTIFY ENGINEER BEFORE ANY PART OF THE WORK IS STARTED SO THAT PROPER CORRECTIONS ARE MADE. IF ENGINEER IS NOT NOTIFIED PRIOR TO COMMENCING OF THE WORK, THE CONTRACTOR SHALL BEAR FULL RESPONSIBILITY FOR ANY DISCREPANCIES, ERRORS AND/OR OMISSIONS.
- ALL DESIGNS AND DRAWINGS HEREIN AND PRINTS ISSUED BY EDISON ENERGY ENGINEERING ARE THE SOLE PROPERTY OF EDISON ENERGY ENGINEERING AND SHALL NOT BE REUSED ON ANY OTHER LOCATION EXCEPT THE ONE FOR WHICH THEY WERE EXPRESSLY DESIGNED.
- THIS DOCUMENT AND THE INFORMATION CONTAINED THEREON IS THE PROPERTY OF EDISON ENERGY ENGINEERING. REPRODUCTION OR USE IN WHOLE OR IN PART OF THIS DOCUMENT AND THE INFORMATION THEREON BY ANYONE EXCEPT AUTHORIZED PERSONS IN THE FURTHERANCE OF THE INTENDED BUSINESS, WITHOUT THE WRITTEN CONSENT OF EDISON ENERGY ENGINEERING COULD BE IN VIOLATION OF COPYRIGHTS AND IS PROHIBITED.
- CONTRACTOR SHALL NOT USE FOR CONSTRUCTION PURPOSES ANY DRAWINGS THAT WERE ADVANCED TO HIM PRIOR TO THE START OF CONSTRUCTION. ALL PLANS BEING USED BY CONTRACTOR SHOULD BEAR A STAMP WITH THE LABEL "FOR CONSTRUCTION ONLY" SIGNED BY THE PROFESSIONAL ENGINEER.

REVISIONS

NO.	DATE	REVISION

SHEET TITLE
CONCEPTUAL PHOTOVOLTAIC SYSTEM ONE-LINE DIAGRAM

DRAWING BY:
EDISON PARES JIMENEZ

DATE
APRIL 22, 2026

PROJECT NO.

SHEET NO.

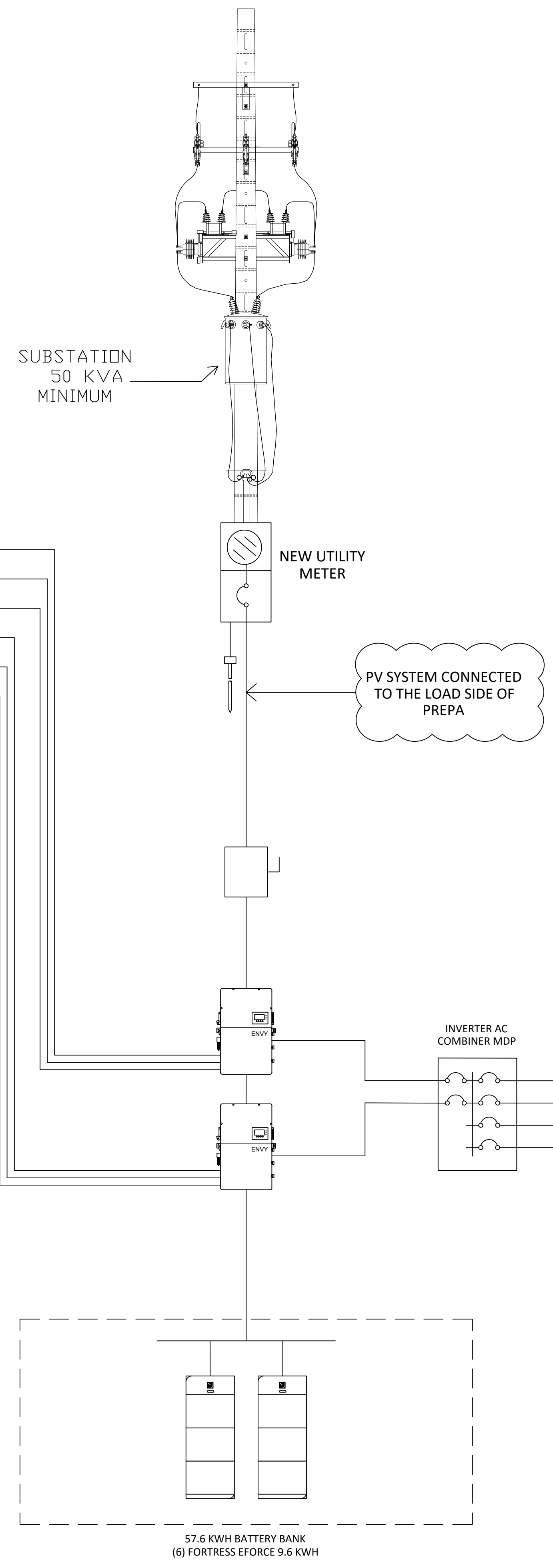
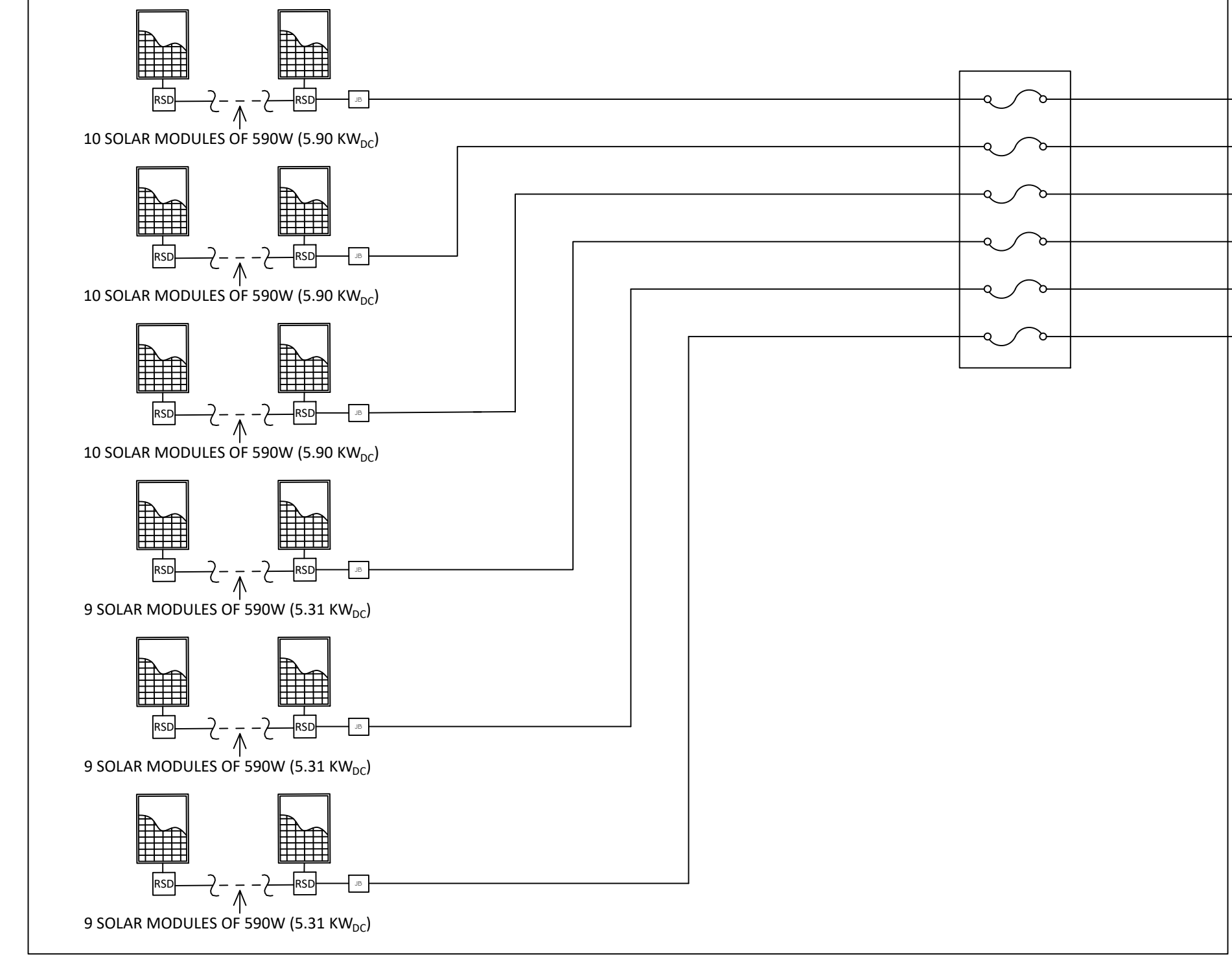
PV & BESS SYSTEM INFORMATION

TOTAL STC DC SYSTEM SIZE	33.63 KW DC
TOTAL AC RATING	24.00 KW AC
TOTAL BATTERY CAPACITY	57.6 KWH
INTERCONNECTION TYPE	LOAD SIDE GRID TIE
INTERCONNECTION VOLTAGE	120/240
PV MODULE SUPPORT SYSTEM	UNIRAC SOLAR MOUNT
INVERTER MODEL	FORTRESS ENVY 12KW
INVERTER CAPACITY	12 KW
INVERTER QUANTITY	2
INVERTER CEC EFFICIENCY	96.5%
PV MODULE	SEG SOLAR SEG-590-BTA-BG
MODULE STC, DC RATING	590W
PV MODULE QTY.	57
SHORT CIRCUIT CURRENT (ISC)	13.94 A
CURRENT AT PMAX (IMPP)	13.28 A
OPEN CIRCUIT VOLTAGE (VOC)	52.37 V
VOLTAGE AT PMAX (VMPP)	44.43 V
BATTERY MODEL	FORTRESS EFORCE
BATTERY MODULE CAPACITY	9.6 KWH
BATTERY MODULE QTY.	6
BATTERY STACK QTY.	2

LEGEND:

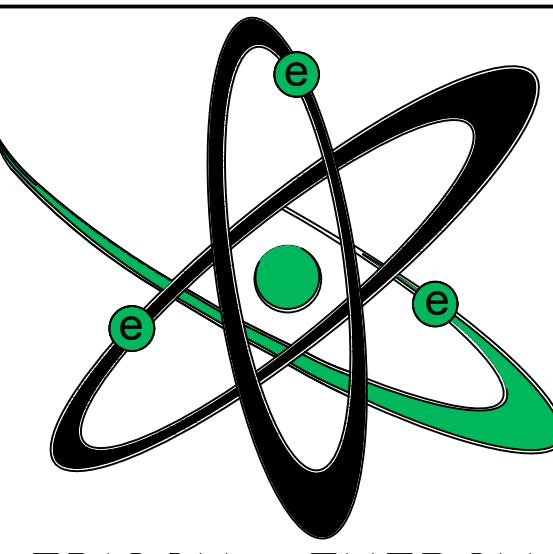
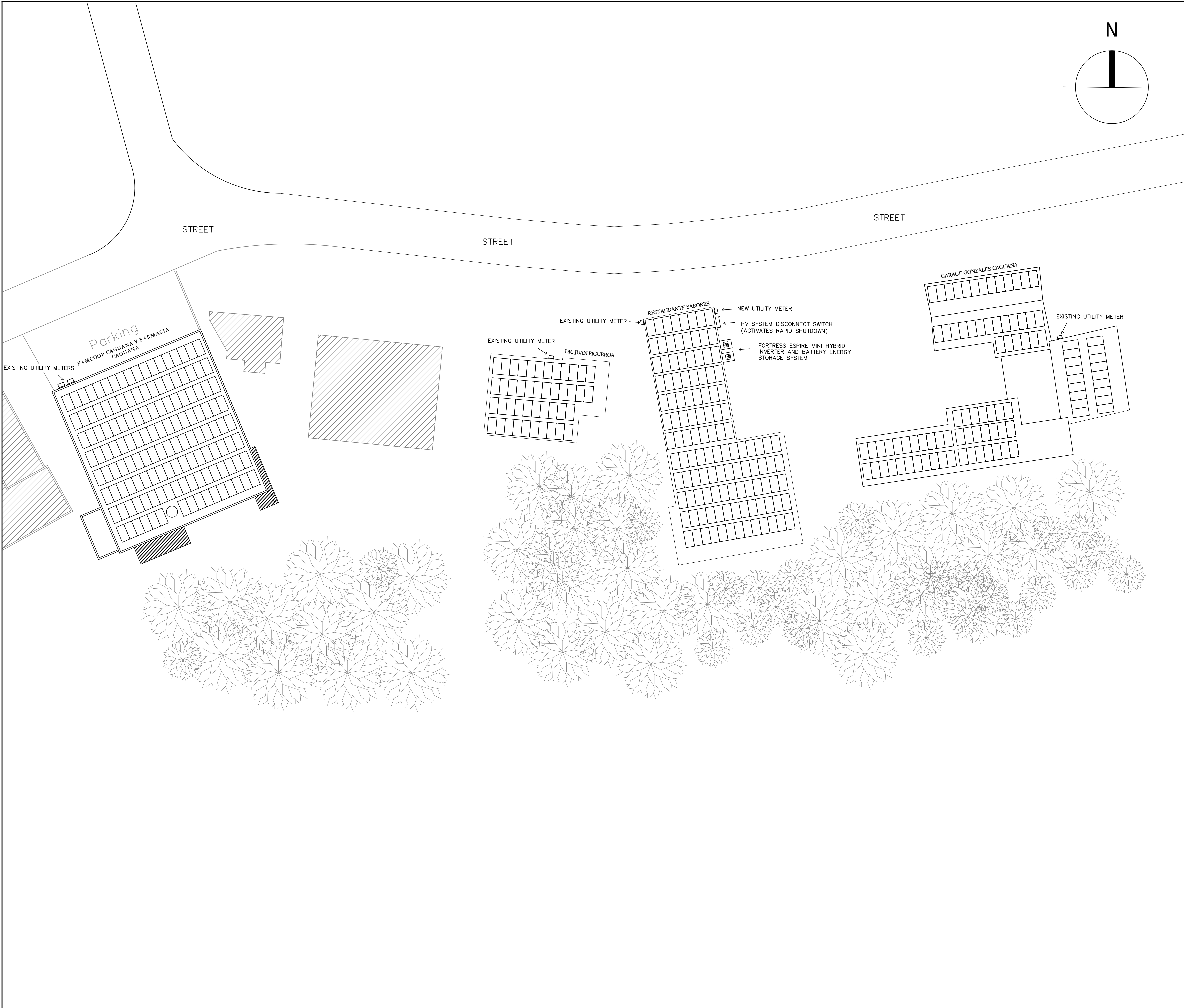
- INVERTER COMBINER PANEL (SCP)
- DISCONNECT SWITCH
- FORTRESS ENVY 12 KW HYBRID INVERTER
- FORTRESS EFORCE 9.6 KWH BATTERY (STACKABLE UP TO 28.8 KWH)
- SEG SOLAR SEG-590-BTA-BG (590W)
- GAS GENERATOR
- MANUAL TRANSFER SWITCH
- ENCLOSURE WITH FUSES

ON-SITE AT PRIMARY MEDICAL CENTER, DR. ADALBERTO LUGO, DRA. NILDA CARRERAS AND LAB. CLINICO CEMI



CONCEPTUAL PHOTOVOLTAIC SYSTEM ONE-LINE DIAGRAM

N.T.S.



EDISON ENERGY ENGINEERING
 Ave. Esmeralda #53
 PMB #25 Guaynabo, P.R. 00696
 Tel: 767-903-7321

PROJECT

PROJECT NAME
CERH MICRORRED UTUADO CAGUANAS

PROPERTY OF:
COOPERATIVA HIDROELECTRICA DE LA MONTAÑA

IMPORTANT NOTES

- CONTRACTOR SHALL VERIFY ALL DIMENSIONS AND SITE CONDITIONS BEFORE PROCEEDING WITH WORK. IF ANY DISCREPANCIES, ERRORS OR OMISSIONS SHOULD BE ENCOUNTERED ON PLANS, CONTRACTOR SHALL NOTIFY ENGINEER BEFORE ANY PART OF THE WORK IS STARTED SO THAT PROPER CORRECTIONS ARE MADE. IF ENGINEER IS NOT NOTIFIED PRIOR TO COMMENCING OF THE WORK, THE CONTRACTOR SHALL BEAR FULL RESPONSIBILITY FOR ANY DISCREPANCIES, ERRORS AND/OR OMISSIONS.
- ALL DESIGNS AND DRAWINGS HEREIN AND PRINTS ISSUED BY EDISON ENERGY ENGINEERING ARE THE SOLE PROPERTY OF EDISON ENERGY ENGINEERING AND SHALL NOT BE REUSED ON ANY OTHER LOCATION EXCEPT THE ONE FOR WHICH THEY WERE EXPRESSLY DESIGNED.
- THIS DOCUMENT AND THE INFORMATION CONTAINED THEREON IS THE PROPERTY OF EDISON ENERGY ENGINEERING. REPRODUCTION OR USE IN WHOLE OR IN PART OF THIS DOCUMENT AND THE INFORMATION THEREON BY ANYONE EXCEPT AUTHORIZED PERSONS IN THE FURTHERANCE OF THE INTENDED BUSINESS, WITHOUT THE WRITTEN CONSENT OF EDISON ENERGY ENGINEERING COULD BE IN VIOLATION OF COPYRIGHTS AND IS PROHIBITED.
- CONTRACTOR SHALL NOT USE FOR CONSTRUCTION PURPOSES ANY DRAWINGS THAT WERE ADVANCED TO HIM PRIOR TO THE START OF CONSTRUCTION. ALL PLANS BEING USED BY CONTRACTOR SHOULD BEAR A STAMP WITH THE LABEL "FOR CONSTRUCTION ONLY" SIGNED BY THE PROFESSIONAL ENGINEER.

REVISIONS

NO.	DATE	REVISION

SHEET TITLE

GENERAL SITEPLAN

DRAWING BY:
WILFREDO PEREZ

DATE
 APRIL 6, 2026

PROJECT NO.

SHEET NO.

LOCATION PLAN
CAR. 111 K8.2 BO CAGUANA
UTUADO PR 00641

NAD83 ZONE 19 COORDINATES
X: 737683.29
Y: 2022698.48

PV SYSTEM INFORMATION

TOTAL STC DC SYSTEM SIZE	236.00 KW DC
TOTAL AC RATING	150.00 KW AC
TOTAL BATTERY CAPACITY	368 KWH
INTERCONNECTION TYPE	LOAD SIDE GRID TIE
INTERCONNECTION VOLTAGE	120/240
PV MODULE SUPPORT SYSTEM	UNIRAC SOLAR MOUNT
INVERTER MODEL	FORTRESS ESPIRE MINI
INVERTER CAPACITY	90 KW AND 60 KW
INVERTER QUANTITY	2
INVERTER CEC EFFICIENCY	96.5 %
PV MODULE	SEG SOLAR SEG-590-BTA-BG
MODULE STC. DC RATING	590W
PV MODULE QTY.	400
SHORT CIRCUIT CURRENT (ISC)	13.94 A
CURRENT AT PMAX (IMPP)	13.28 A
OPEN CIRCUIT VOLTAGE (VOC)	52.37V
VOLTAGE AT PMAX (VMPP)	44.43V

EQUIPMENT LEGEND:

	NEW SOLAR MODULE MODEL: SEG SOLAR SEG-590-BTA-BG (400 TOTAL MODULES)
	NEW HYBRID INVERTER MODEL: FORTRESS ESPIRE MINI (2 TOTAL OF INVERTERS)
	UTILITY METER
	TRANSFER SWITCH
	PV SYSTEM DISCONNECT SWITCH (ACTIVATES RAPID SHUTDOWN)
	INVERTER COMBINER PANEL
	PROPANE GENERATOR

GENERAL SITEPLAN
 N.T.S.



EDISON ENERGY ENGINEERING
 Ave. Esmeralda #53
 P.M.B #25 Guaynabo, P.R. 00696
 Tel. 787-903-7321

PROJECT

PROJECT NAME
 CERH MICRORRED UTUADO CAGUANAS

PROPERTY OF:
 COOPERATIVA HIDROELECTRICA DE LA MONTAÑA

IMPORTANT NOTES

- CONTRACTOR SHALL VERIFY ALL DIMENSIONS AND SITE CONDITIONS BEFORE PROCEEDING WITH WORK. IF ANY DISCREPANCIES, ERRORS OR OMISSIONS SHOULD BE ENCOUNTERED ON PLANS, CONTRACTOR SHALL NOTIFY ENGINEER BEFORE ANY PART OF THE WORK IS STARTED SO THAT PROPER CORRECTIONS ARE MADE. IF ENGINEER IS NOT NOTIFIED PRIOR TO COMMENCING OF THE WORK, THE CONTRACTOR SHALL BEAR FULL RESPONSIBILITY FOR ANY DISCREPANCIES, ERRORS AND/OR OMISSIONS.
- ALL DESIGNS AND DRAWINGS HEREIN AND PRINTS ISSUED BY EDISON ENERGY ENGINEERING ARE THE SOLE PROPERTY OF EDISON ENERGY ENGINEERING AND SHALL NOT BE REUSED ON ANY OTHER LOCATION EXCEPT THE ONE FOR WHICH THEY WERE EXPRESSLY DESIGNED.
- THIS DOCUMENT AND THE INFORMATION CONTAINED THEREON IS THE PROPERTY OF EDISON ENERGY ENGINEERING. REPRODUCTION OR USE IN WHOLE OR IN PART OF THIS DOCUMENT AND THE INFORMATION THEREON BY ANYONE EXCEPT AUTHORIZED PERSONS IN THE FURTHERANCE OF THE INTENDED BUSINESS, WITHOUT THE WRITTEN CONSENT OF EDISON ENERGY ENGINEERING COULD BE IN VIOLATION OF COPYRIGHTS AND IS PROHIBITED.
- CONTRACTOR SHALL NOT USE FOR CONSTRUCTION PURPOSES ANY DRAWINGS THAT WERE ADVANCED TO HIM PRIOR TO THE START OF CONSTRUCTION. ALL PLANS BEING USED BY CONTRACTOR SHOULD BEAR A STAMP WITH THE LABEL "FOR CONSTRUCTION ONLY" SIGNED BY THE PROFESSIONAL ENGINEER.

REVISIONS

NO.	DATE	REVISION

SHEET TITLE

CONCEPTUAL PHOTOVOLTAIC SYSTEM ONE-LINE DIAGRAM

DRAWING BY:
 WILFREDO PEREZ

DATE
 APRIL 6, 2026

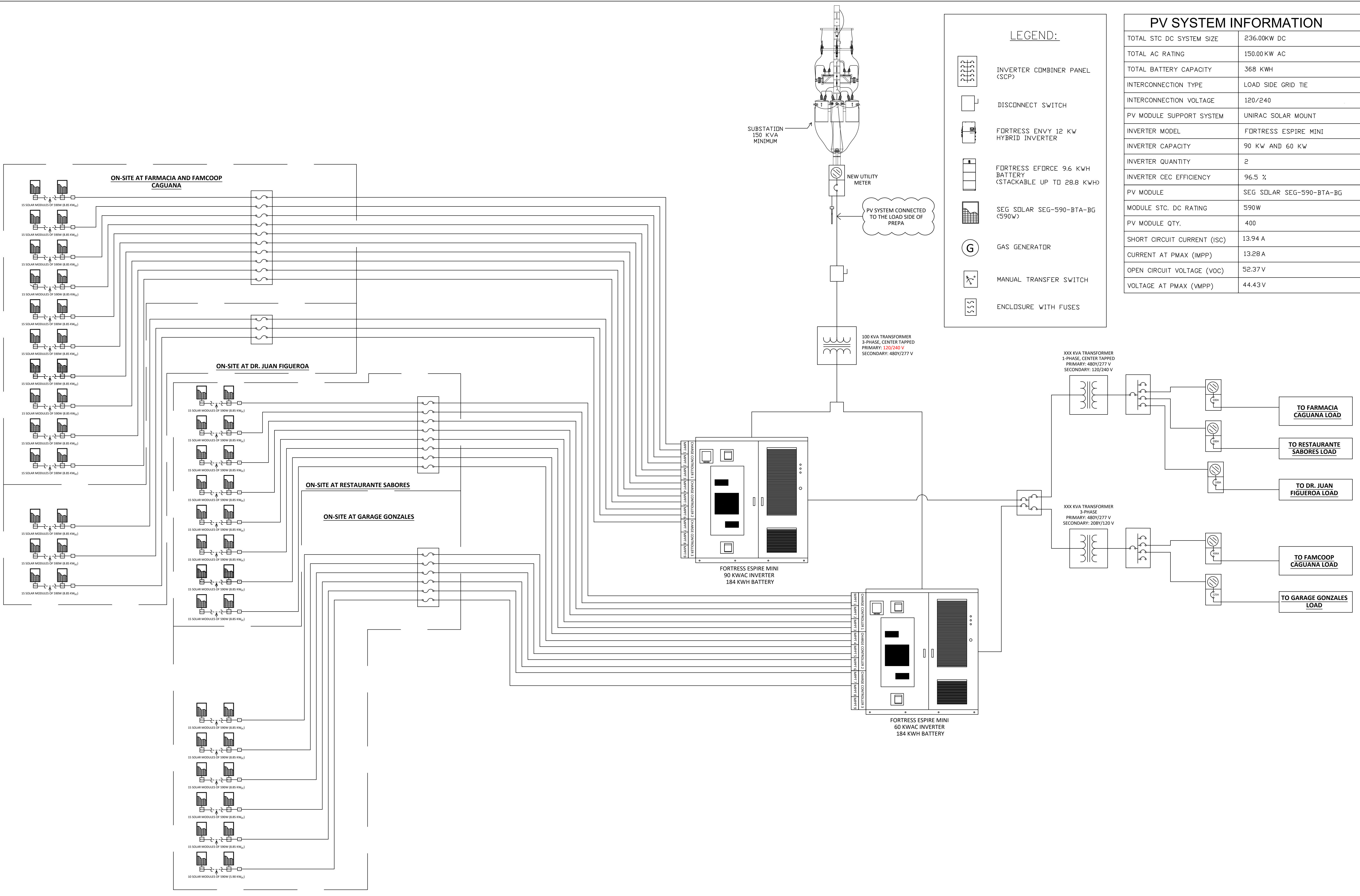
PROJECT NO.

SHEET NO.

PV SYSTEM INFORMATION	
TOTAL STC DC SYSTEM SIZE	236.00KW DC
TOTAL AC RATING	150.00 KW AC
TOTAL BATTERY CAPACITY	368 KWH
INTERCONNECTION TYPE	LOAD SIDE GRID TIE
INTERCONNECTION VOLTAGE	120/240
PV MODULE SUPPORT SYSTEM	UNIRAC SOLAR MOUNT
INVERTER MODEL	FORTRESS ESPIRE MINI
INVERTER CAPACITY	90 KW AND 60 KW
INVERTER QUANTITY	2
INVERTER CEC EFFICIENCY	96.5 %
PV MODULE	SEG SOLAR SEG-590-BTA-BG
MODULE STC DC RATING	590W
PV MODULE QTY.	400
SHORT CIRCUIT CURRENT (ISC)	13.94 A
CURRENT AT P _{MAX} (I _{MPP})	13.28 A
OPEN CIRCUIT VOLTAGE (VOC)	52.37 V
VOLTAGE AT P _{MAX} (V _{MPP})	44.43 V

LEGEND:

- INVERTER COMBINER PANEL (SCP)
- DISCONNECT SWITCH
- FORTRESS ENVY 12 KW HYBRID INVERTER
- FORTRESS EFORCE 9.6 KWH BATTERY (STACKABLE UP TO 28.8 KWH)
- SEG SOLAR SEG-590-BTA-BG (590W)
- GAS GENERATOR
- MANUAL TRANSFER SWITCH
- ENCLOSURE WITH FUSES



CONCEPTUAL PHOTOVOLTAIC SYSTEM ONE-LINE DIAGRAM
 N.T.S.